



**NEST**  
BY HALLMARK

Your place to grow



**Hallmark  
Homes**





**NEST**  
BY HALLMARK

## INTRODUCING NEST BY HALLMARK

As the name suggests, Nest by Hallmark has been specially created for growing families looking to settle into their forever home now — with plenty of room for everyone to spread their wings in the future.

At Hallmark Homes, we saw a genuine need for an innovative range of flexible, family-friendly home designs that represent awesome value for money. After all, just because you have a growing family, doesn't mean you can't live your life in a stylish, cleverly designed home that offers the luxury you deserve.

As a family-owned business with over 40 years' experience, we know how to tick all the boxes when it comes to creating a functional, stylish, spacious home that can take you from toddlers to teenagers — without moving house! At Hallmark, we've built thousands of gorgeous homes for South East Queenslanders. In fact, family is at the heart of everything we do.

So if you're looking for your place to grow, experience the love and laughter of family life with Nest by Hallmark.







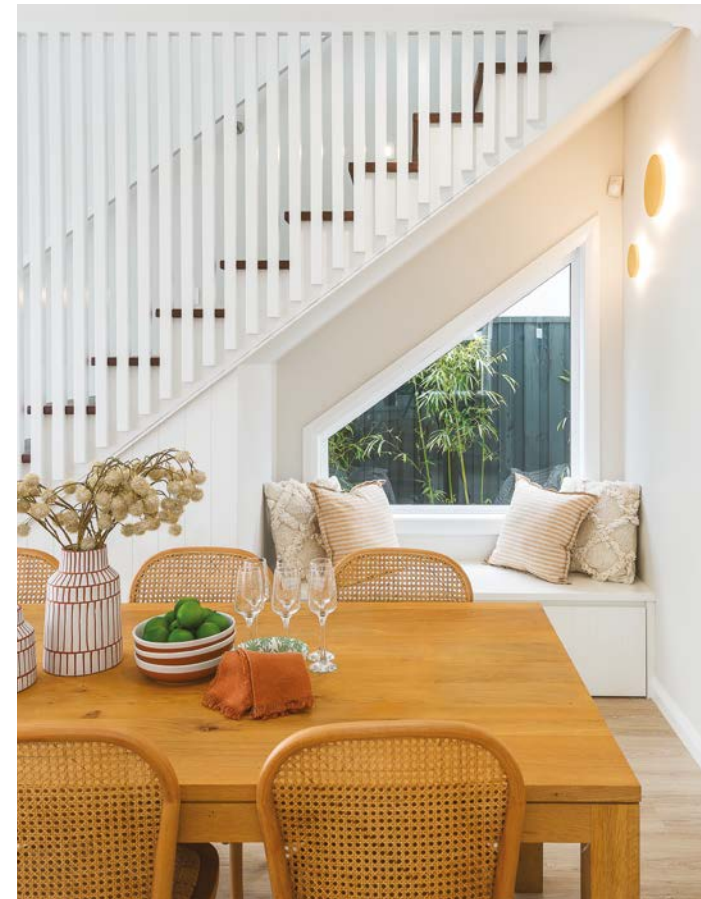
# Flexible family living at its finest

Because no two families are the same, Nest by Hallmark has been designed with lots of different lifestyle needs in mind. We've created a collection of single and double-storey flexible floor plans, that let you customise your home to suit the way your family lives.

Our designers have redefined family living, by thinking outside the box to come up with an exciting range of premium home designs, and stylish façade options to choose from. Featuring clever 'zoned living', there's plenty of room for everyone to enjoy their own space — even as your family grows. In fact, all Nest homes have custom modules that you can switch in and out, depending on what's important to you and your family.

So how does it work? First, choose the floor plan that suits your family best. Then, you can either go with that plan as is, or modify the design by switching in one of the custom modules. It's easy, it's affordable, and it's all ready to roll!

Live the family life you've always wanted, sooner than you ever expected. Nurture your family's dream with Nest by Hallmark.







## Discover your new home

LOT WIDTH	HOUSE NAME	FLOOR AREA		BEDS	BATHS	GARAGE	LIVING	STUDY	PG
		M <sup>2</sup>	SQ						
<b>SINGLE-STORY</b>									
14m	Birch 245	244.42	26.30	4	2	2	3	1	8
	Cedar 255	254.76	27.42	4	2	2	3	•	10
	Tallowood 261	260.83	28.07	4	2	2	3	1	12
	Willow 251	250.53	26.96	4	2	2	3	1	14
	Willow 267	266.94	28.73	4	2	2	3	1	16
14m Façade Options									18
16m	Maple 234	233.84	25.17	4	2	2	2	1	22
	Linden 261	260.89	28.08	4	2	2	3	2	24
	Cedar 263	263.65	28.37	4	2	2	3	1	26
	Willow 303	302.45	32.55	4	2	2	3	2	28
16m Façade Options									30
18m	Myrtle 278	278.49	29.97	4	2	2	3	2	34
	Magnolia 303	303.00	32.61	4	2	2	3	2	36
	Willow 326	326.45	35.14	4	2	2	3	2	38
18m Façade Options									40
<b>DOUBLE-STORY</b>									
10m	Outlook 287	287.55	30.95	4	2.5	2	3	2	44
14m	Grande 359	358.92	38.63	5	3	2	3	2	46





## Nest Range for 14m lot Frontage

Nest by Hallmark offers an extensive selection of home designs created specifically to suit lots with a 14m frontage. Once you have chosen the home design that best suits your lifestyle, view our stunning range of façades on pages 18 and 19. There's sure to be a façade style that best suits you and your family!





# Birch 245

The Birch 245 is an open-plan single-storey home design best suited to a 14m lot frontage. The spacious media room, kids rooms and activity zone is cleverly designed to be located at one end of the home. The private master suite is spacious with a walk-in robe and ensuite. The open-plan living and dining room is overlooked by the gourmet kitchen with an island bench and walk-in pantry. This home has been thoughtfully designed for the growing family.

Bed 1	4.1 x 3.4
Bed 2	3.6 x 2.9
Bed 3	3.6 x 2.9
Bed 4	3.9 x 2.9
Study	1.7 x 0.9
Dining	5.0 x 2.3
Kitchen	5.0 x 2.7
Media	4.6 x 3.5
Living	5.0 x 3.8
Activity	4.2 x 2.9
Alfresco	3.4 x 3.0
Garage	5.8 x 5.8

TOTAL FLOOR AREA  
**244.42m<sup>2</sup>**

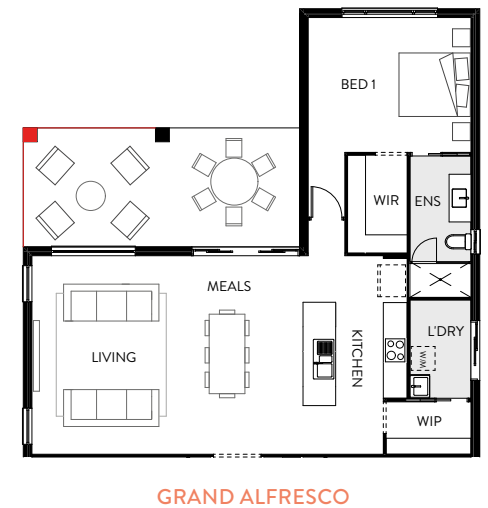
MIN. FRONTAGE  
**14m**

LENGTH 24.0m • WIDTH 12.8m

BEDS 4
LIVING 3
GARAGE 2
BATHS 2
STUDY 1



## Floor Plan Options



# Cedar 255

The Cedar 255 is a stunning open-plan home design that's an entertainer's dream with the living, dining, and alfresco areas located centrally within the home. With a gourmet kitchen ideally positioned to overlook the living area, and a large walk in-pantry, this home really has it all. The separate media room plus activity room will keep the kids entertained while the adults can relax in their private master suite sanctuary at the other end of the home.

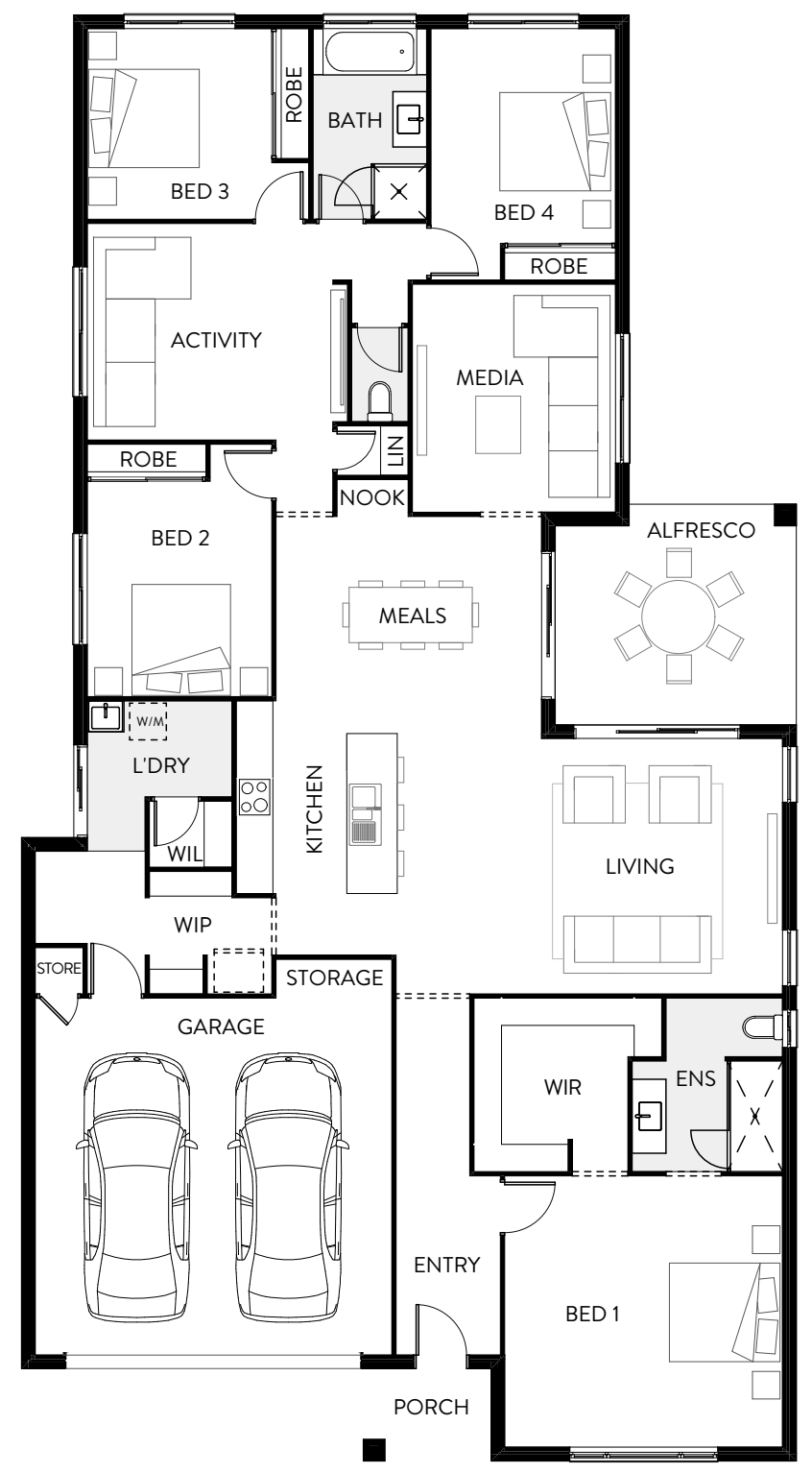
Bed 1	4.5 x 4.4
Bed 2	3.5 x 3.0
Bed 3	3.1 x 3.0
Bed 4	3.4 x 3.0
Dining	4.3 x 3.0
Kitchen	4.0 x 2.5
Media	3.7 x 3.3
Living	5.0 x 4.1
Activity	3.9 x 3.5
Alfresco	3.9 x 3.5
Garage	5.8 x 5.8

TOTAL FLOOR AREA  
**254.76m<sup>2</sup>**

MIN. FRONTAGE  
**14m**

LENGTH 23.5m • WIDTH 12.6m

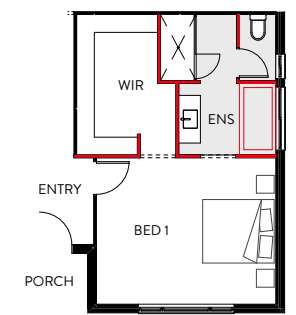
**BEDS** 4    **LIVING** 3    **GARAGE** 2    **BATHS** 2    **STUDY** 1



## Floor Plan Options



**CORNER STACKERS**  
• Two 2.1 x 3.1m stacker doors



**ALTERNATE ENSUITE / BED 1 LAYOUT**



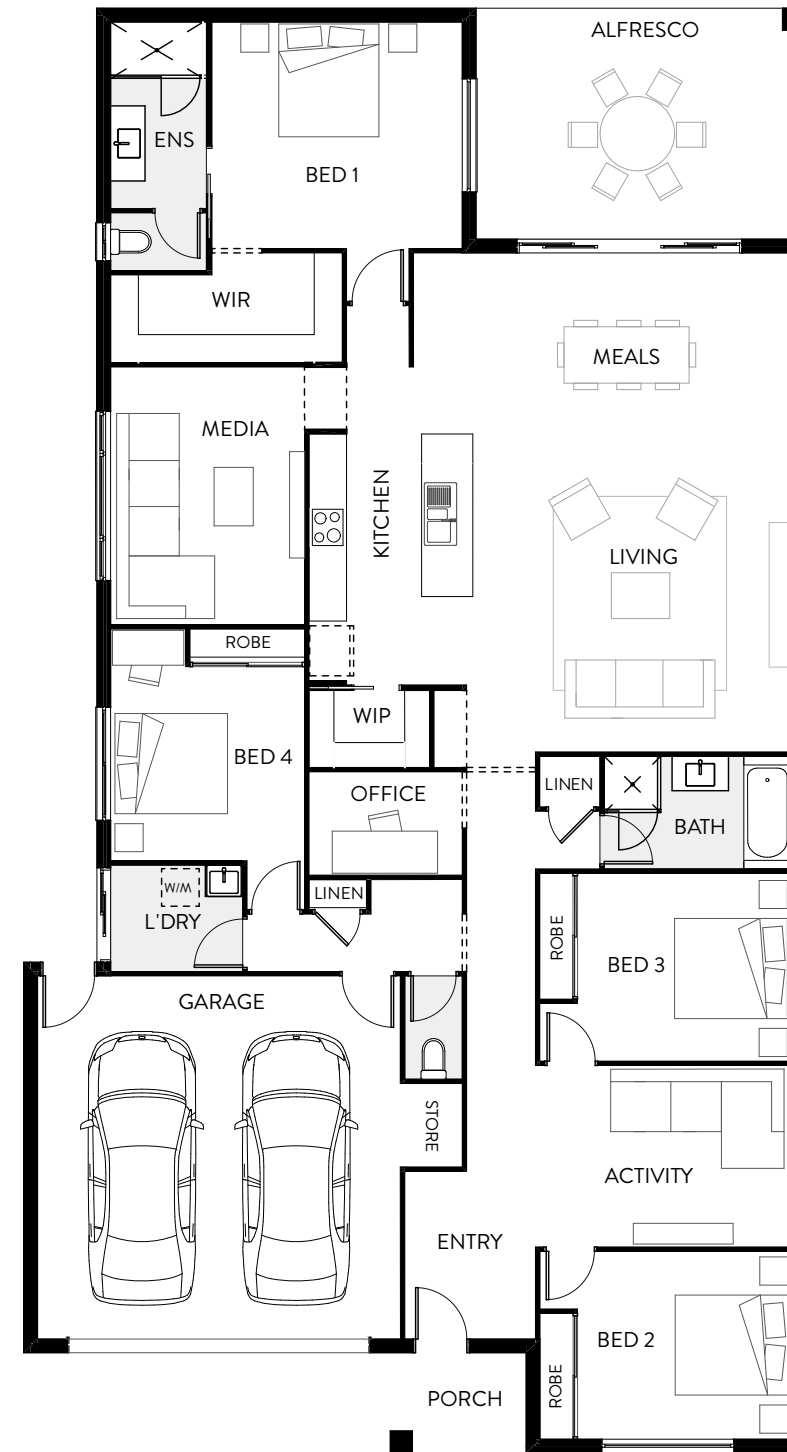
# Tallowwood 261

The open-plan living area and alfresco of the Tallowwood 261 creates the ultimate central hub, adding a spacious feel to this beautiful home design. Cleverly designed, this spacious home has many living zones making it the perfect design for growing families. The gourmet kitchen overlooks the living area making entertaining a breeze, and with multiple linen cupboards, this home is not short on storage!

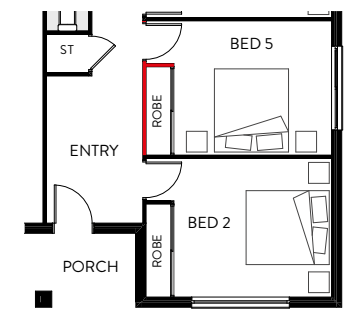
Bed 1	4.0 x 3.6
Bed 2	3.4 x 3.0
Bed 3	3.4 x 3.0
Bed 4	3.1 x 3.1
Dining	6.0 x 2.8
Kitchen	4.0 x 2.5
Media	4.1 x 3.1
Living	5.0 x 4.5
Office	2.4 x 1.6
Activity	4.0 x 2.9
Alfresco	5.2 x 3.6
Garage	5.8 x 5.8

TOTAL FLOOR AREA **260.83m<sup>2</sup>**      MIN. FRONTAGE **14m**  
 LENGTH 23.1m • WIDTH 12.5m

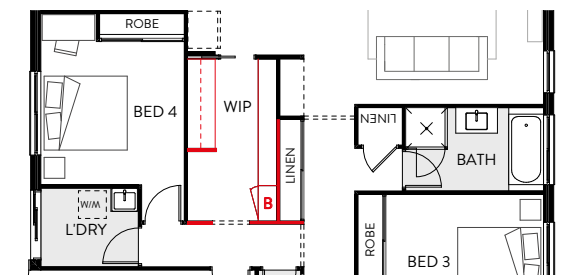
BEDS 4
LIVING 3
GARAGE 2
BATHS 2
STUDY 1



## Floor Plan Options



5TH BEDROOM



WALK-THROUGH PANTRY



# Willow 251

Enjoy peace and quiet in the Willow 251 with the living and dining areas situated at the rear of the home. The stunning alfresco made accessible by the gourmet kitchen and living zones will turn every day living and entertaining into an exciting experience for all! Enjoy separate activity and media rooms for when you just want to get away from it all. The master suite is spacious and has a large walk-in robe and ensuite ready to retreat to when needed.

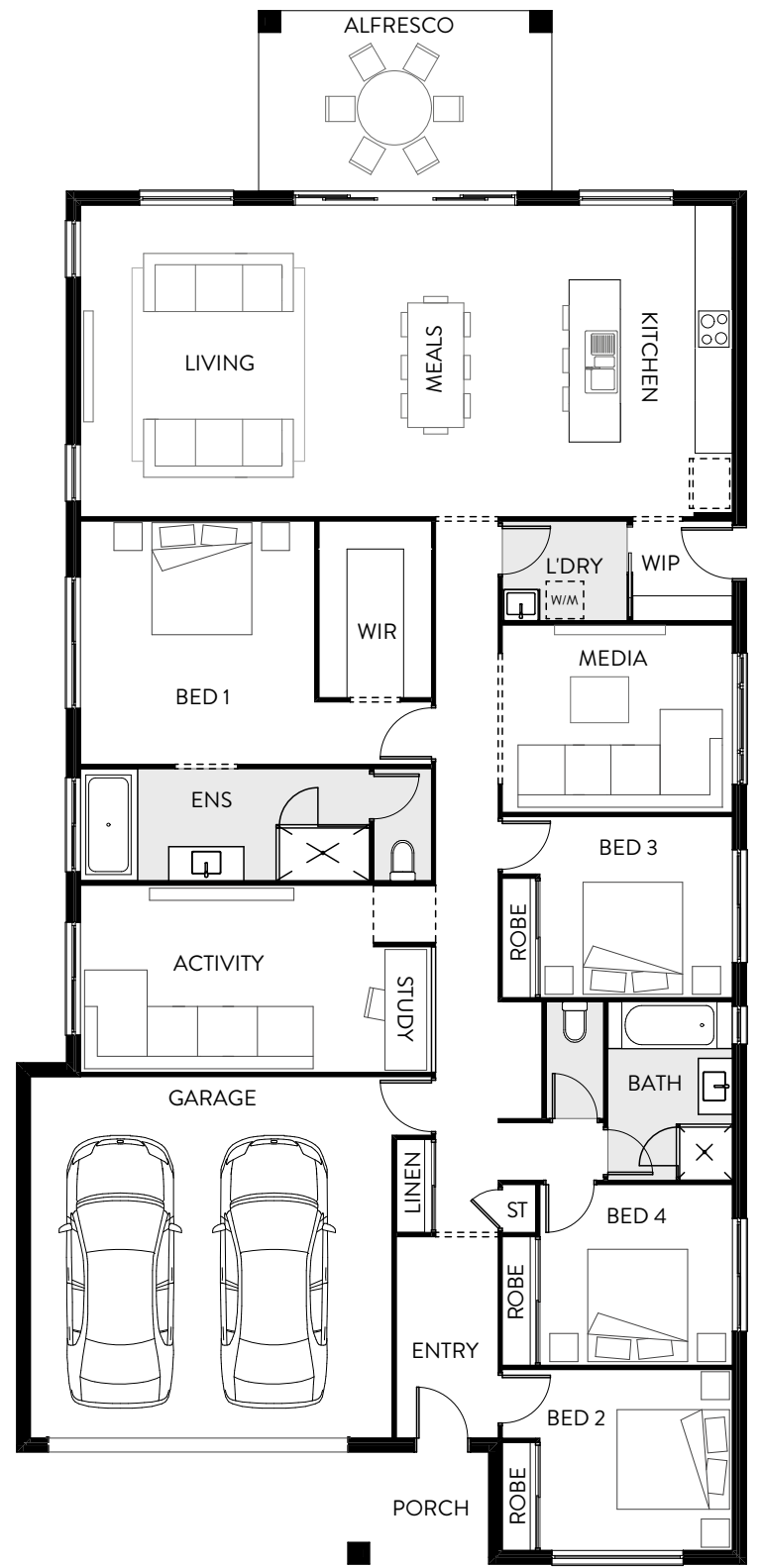
Bed 1	3.9 x 3.7
Bed 2	3.0 x 2.9
Bed 3	3.0 x 2.9
Bed 4	3.0 x 2.9
Dining	5.0 x 2.5
Kitchen	5.0 x 3.5
Media	3.6 x 3.0
Living	5.0 x 4.4
Activity	4.0 x 3.0
Study	2.0 x 0.7
Alfresco	4.7 x 2.9
Garage	5.8 x 5.8

TOTAL FLOOR AREA  
**250.53m<sup>2</sup>**

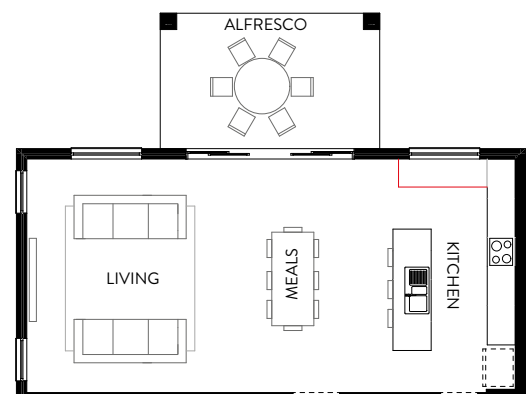
MIN. FRONTAGE  
**14m**

LENGTH 24.9m • WIDTH 11.7m

**BEDS** 4    **LIVING** 3    **GARAGE** 2    **BATHS** 2    **STUDY** 1

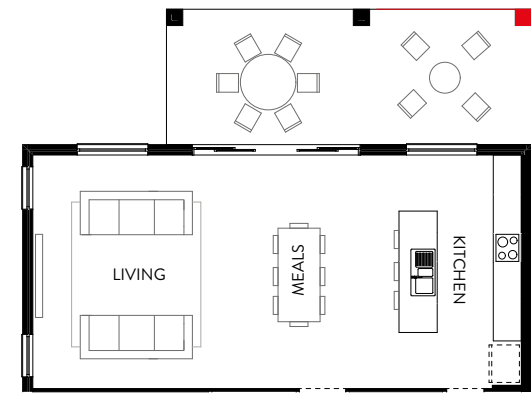


## Floor Plan Options



**STONE BENCH SERVRY WITH CUPBOARDS**

- 1.9m stone servery with under bench cupboards
- 12-15 window



**GRAND ALFRESCO**



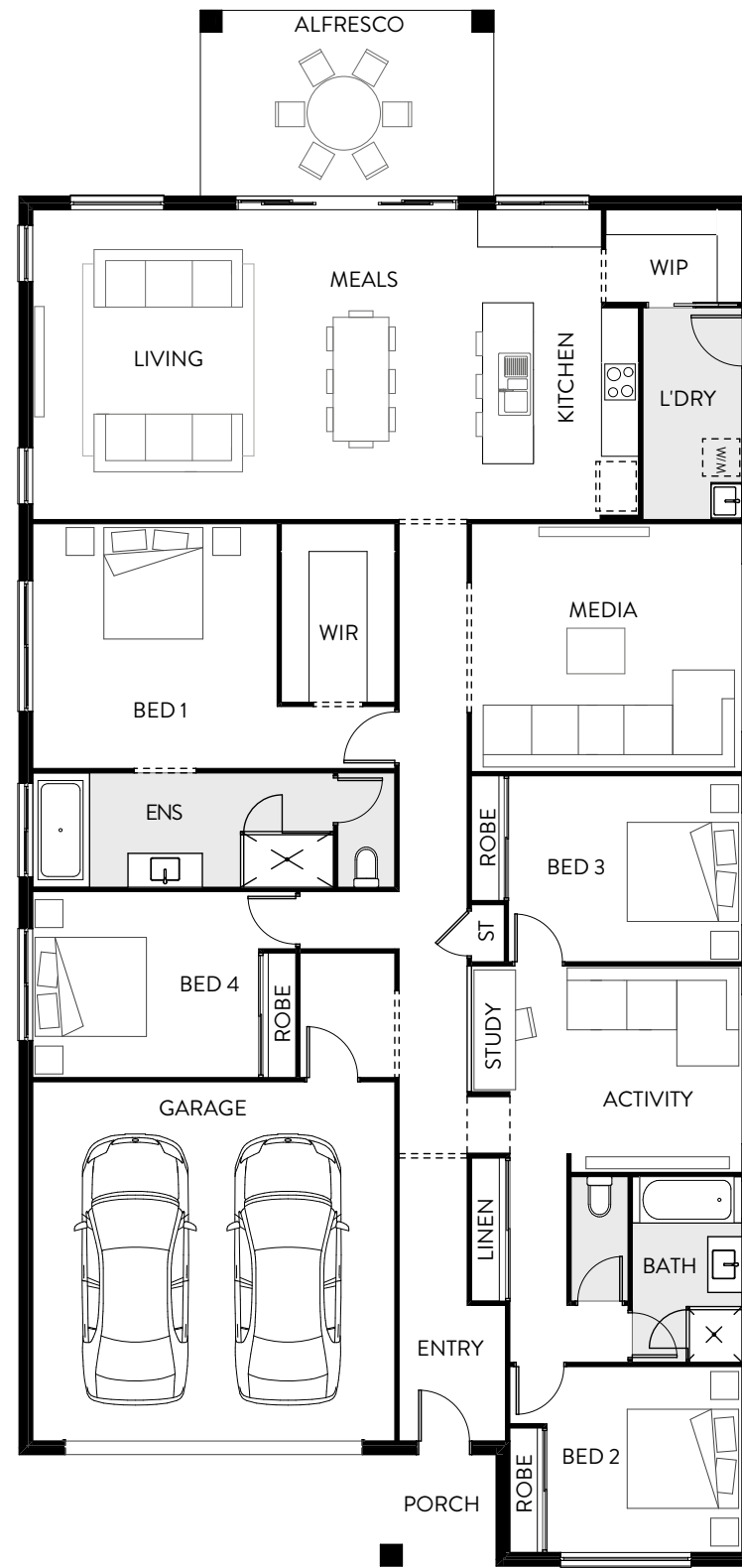
# Willow 267

Enjoy peace and quiet in the Willow 267 with the spacious living, alfresco and dining areas located at the rear of the home. The spacious media room is perfect for those Netflix nights in and the separate activity room and study is centrally located around the kids bedrooms. The gourmet kitchen features a large walk-in pantry that cleverly leads to the laundry area, easily hidden away from guests! This home has been thoughtfully designed for the growing family.

Bed 1	3.9 x 3.9
Bed 2	3.1 x 3.0
Bed 3	3.7 x 3.0
Bed 4	3.6 x 3.0
Dining	5.0 x 2.5
Kitchen	5.0 x 3.5
Media	4.3 x 4.0
Living	5.0 x 4.4
Activity	3.7 x 3.3
Study	2.0 x 0.7
Alfresco	4.7 x 3.0
Garage	5.8 x 5.8

TOTAL FLOOR AREA **266.94m<sup>2</sup>** MIN. FRONTAGE **14m**  
 LENGTH 25.1m • WIDTH 11.9m

**BEDS**  
4
**LIVING**  
3
**GARAGE**  
2
**BATHS**  
2
**STUDY**  
1



## Floor Plan Options





## 14m Façade Options

Now that you've decided on a floor plan best suited to you and your family, it's time to choose the façade for your brand-new home. Designed with maximum street appeal in mind, we've put together a collection of 9 stunning façades to choose from.



Classic Façade



Maison Façade



Urban Façade



Classic + Façade



Californian Façade



Metro Façade



Hamptons Façade



Valley Façade



Seaside Façade



## Nest Range for 16m lot Frontage

Nest by Hallmark provides a stunning range of flexible floor plans designed to sit perfectly on a lot with a 16m frontage. You'll love the variety of home designs in this collection, plus the latest selection of façades to choose from on pages 30 and 31.





# Maple 234

The Maple 234 is a four bedroom single-storey home design that does not compromise on space or functionality. The front master suite is thoughtfully tucked away from the rest of the home making it the perfect getaway retreat with ensuite and large walk-in robe. The open-plan living and dining areas open up to the alfresco, offering an additional space perfect for entertaining family and friends. Complete with ample storage and a hidden laundry, this home is perfect for family living.

Bed 1	4.2 x 3.1
Bed 2	3.1 x 3.0
Bed 3	3.1 x 3.1
Bed 4	3.4 x 3.0
Dining	3.8 x 3.5
Kitchen	3.4 x 2.4
Media	4.1 x 3.1
Living	4.8 x 4.4
Study	2.2 x 1.5
Alfresco	3.5 x 3.4
Garage	5.8 x 5.8

TOTAL FLOOR AREA  
233.84m<sup>2</sup>

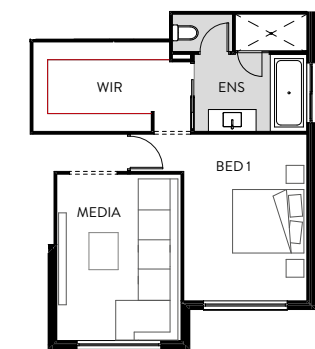
MIN. FRONTAGE  
16m

LENGTH 19.2m • WIDTH 14.3m

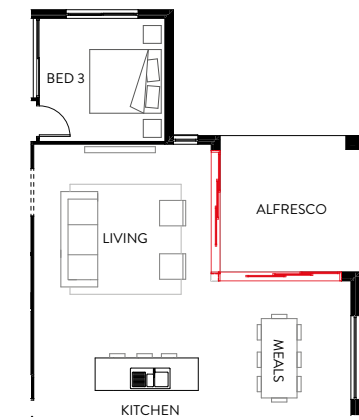
<b>BEDS</b> 4	<b>LIVING</b> 2	<b>GARAGE</b> 2	<b>BATHS</b> 2	<b>STUDY</b> 1
------------------	--------------------	--------------------	-------------------	-------------------



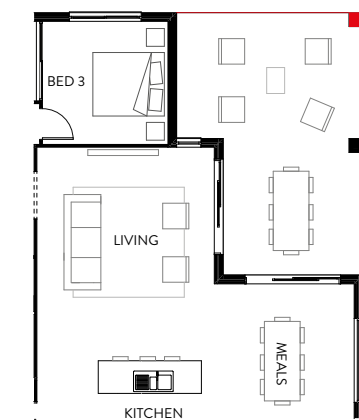
## Floor Plan Options



LARGER WALK IN ROBE



CORNER STACKER DOORS  
• Two 2.1 x 3.1m stacker doors



GRAND ALFRESCO



# Linden 261

Sit back and relax in the Linden 261. This versatile and spacious home is best suited to a 16m lot. The front of the home is a childrens retreat, with three bedrooms situated off the centrally located activity and study zone. Walk through the gallery and pass by a discreet walk-in linen robe and cleverly hidden laundry room with an additional linen cupboard. Upon entering the living and dining area, you'll notice just how spacious this home design is. The private master suite has a walk-in robe, ensuite and space for a makeup vanity. With a separate media room and office, this home really has it all.

Bed 1	4.5 x 3.2
Bed 2	3.1 x 3.0
Bed 3	3.2 x 3.0
Bed 4	3.5 x 3.0
Dining	3.4 x 3.5
Kitchen	4.3 x 2.4
Media	3.5 x 3.2
Living	5.7 x 4.2
Activity	3.7 x 3.1
Study	2.0 x 0.7
Office	2.5 x 1.7
Alfresco	3.3 x 3.4
Garage	5.8 x 5.8

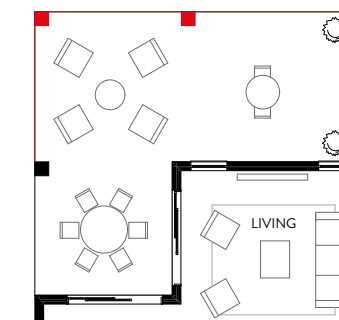
TOTAL FLOOR AREA **260.89m<sup>2</sup>**      MIN. FRONTAGE **16m**

LENGTH 22.5m • WIDTH 14.3m

BEDS 4
LIVING 3
GARAGE 2
BATHS 2
STUDY 2



## Floor Plan Options



GRAND ALFRESCO



CORNER STACKER DOORS  
• Two 2.1 x 3.1m stacker doors



# Cedar 263

The Cedar 263 is a beautiful open-plan home design that's an entertainer's delight and sure to tick all the boxes for anyone looking to build a single-storey home. With a gourmet kitchen ideally positioned to overlook the living area, entertaining guests will be a treat, not to mention a separate media room to keep the kids entertained and a dual study space perfect for work-from-home setups. Ideally suited to a wider lot, this single-storey house plan is spacious, practical and sure to impress.

Bed 1	4.3 x 3.4
Bed 2	3.2 x 3.0
Bed 3	3.2 x 3.0
Bed 4	3.1 x 3.3
Dining	3.4 x 3.4
Kitchen	4.0 x 2.4
Media	4.0 x 3.5
Living	4.6 x 4.6
Activity	3.9 x 3.4
Study	3.4 x 1.8
Office	2.0 x 1.4
Alfresco	3.7 x 3.5
Store	1.5 x 1.4
Garage	5.8 x 5.8

TOTAL FLOOR AREA  
**263.65m<sup>2</sup>**

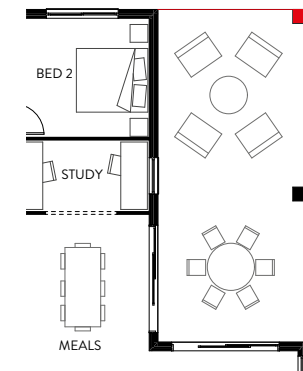
MIN. FRONTAGE  
**16m**

LENGTH 23.5m • WIDTH 14.3m

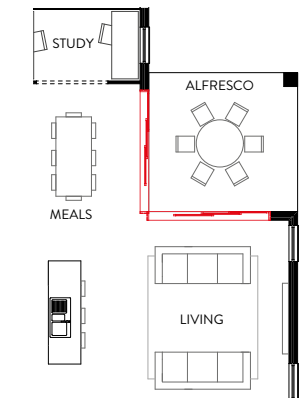
**BEDS** 4    **LIVING** 3    **GARAGE** 2    **BATHS** 2    **STUDY** 2



## Floor Plan Options



GRAND ALFRESCO



CORNER STACKER DOORS  
• Two 2.1 x 3.1m stacker doors



# Willow 303

The Willow 303 has a great balance of living and bedroom space and is best suited to a 16m lot frontage. This home design draws you in with the separate living and dining areas located at the rear of home, providing a central hub for entertaining. The kids zone is cleverly located away from it all, and has three bedrooms plus an activity and study room. The private office, library nook, and hidden laundry really enhance the liveability of this design. The master suite has been thoughtfully designed with a large walk-in robe and ensuite with bath.

Bed 1	3.9 x 3.7
Bed 2	3.0 x 3.0
Bed 3	3.1 x 3.0
Bed 4	3.4 x 3.1
Dining	5.0 x 2.8
Kitchen	5.0 x 3.7
Media	5.1 x 4.0
Living	5.0 x 4.5
Activity	3.2 x 3.0
Study	2.6 x 0.9
Office	3.9 x 1.8
Alfresco	5.3 x 3.0
Garage	5.8 x 5.8

TOTAL FLOOR AREA  
302.45m<sup>2</sup>

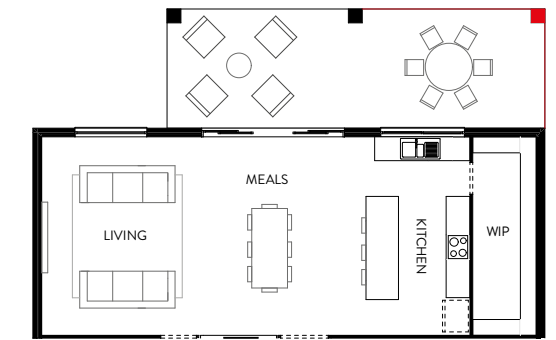
MIN. FRONTAGE  
16m

LENGTH 25.2m • WIDTH 14.3m

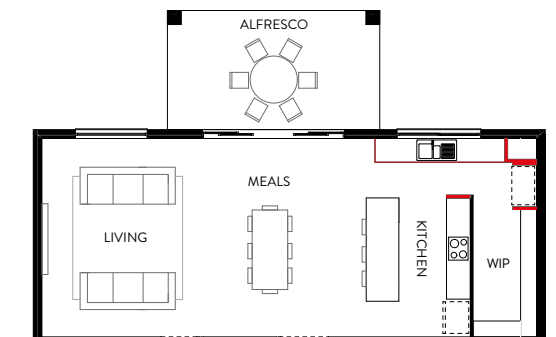
<b>BEDS</b> 4	<b>LIVING</b> 3	<b>GARAGE</b> 2	<b>BATHS</b> 2	<b>STUDY</b> 2
------------------	--------------------	--------------------	-------------------	-------------------



## Floor Plan Options

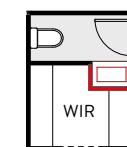


GRAND ALFRESCO



ALTERNATE KITCHEN LAYOUT

- Servery bench extension
- Main kitchen bench extension



POWDER ROOM UPGRADE

- With 750mm vanity



## 16m Façade Options

Our stunning range of Nest by Hallmark façades have been curated to complement your choice of home design perfectly. Inspired by the latest trends in exterior design, you can mix and match from 9 gorgeous looks to create the ultimate kerb-appeal.



Classic Façade



Maison Façade



Urban Façade



Classic + Façade



Californian Façade



Metro Façade



Hamptons Façade



Valley Façade



Seaside Façade



## Nest Range for 18m lot Frontage

Nest by Hallmark provides a gorgeous range of home designs suited to fit a lot with an 18m frontage. Our beautiful range of floor plans come with all the style, functionality, and quality that you would expect from any Hallmark Home. Once you have chosen the home design best suited to you, head over to pages 40 and 41 to choose one of our many façades to complete the look.





# Myrtle 278

The Myrtle 278 is a functional home design best suited to an 18m lot frontage. The design incorporates a separate wing at the front of the home for three bedrooms and an activity room. As you make your way through the gallery, you'll be greeted by an open-plan living, dining and alfresco area, plus a dual study room. The gourmet kitchen has a large walk-in pantry which then flows through to a hidden laundry. The spacious master suite is privately tucked away at the rear of the home and includes a generous walk-in robe and ensuite.

Bed 1	4.0 x 4.0
Bed 2	3.8 x 3.0
Bed 3	3.4 x 3.3
Bed 4	3.4 x 3.1
Dining	3.9 x 3.5
Kitchen	4.4 x 2.7
Media	4.0 x 3.9
Living	5.0 x 4.6
Activity	3.4 x 3.3
Study	3.4 x 2.0
Alfresco	3.6 x 3.3
Garage	5.8 x 5.8

TOTAL FLOOR AREA **278.49m<sup>2</sup>**      MIN. FRONTAGE **18m**

LENGTH 24.3m • WIDTH 15.0m

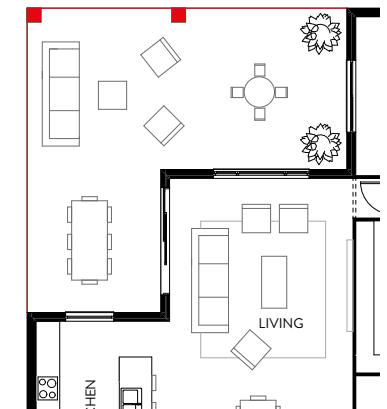
**BEDS**  
4
**LIVING**  
3
**GARAGE**  
2
**BATHS**  
2
**STUDY**  
1



## Floor Plan Options



**CORNER STACKER DOORS**  
• 21-27 SSF & 21-22 SSF



**GRAND ALFRESCO**



# Magnolia 303

The Magnolia 303 celebrates family living with three living zones, ensuring there's space for everyone to enjoy. This spacious four bedroom home has been designed with functionality in mind with a separate kids zone, central media room, and alfresco area to make the most out of Queensland living. The gourmet kitchen leads to a large walk-in pantry which then flows through to a hidden laundry. The private master suite is the ultimate space to get away from it all with a large walk-in robe and ensuite. Complete with dual study, walk-in linen cupboard and more, this home is ideal for family living.

Bed 1	4.2 x 4.5
Bed 2	3.8 x 3.4
Bed 3	3.5 x 3.0
Bed 4	3.5 x 3.1
Dining	3.4 x 2.3
Kitchen	3.6 x 3.5
Media	4.5 x 3.4
Living	6.9 x 4.0
Activity	4.4 x 3.4
Study	2.7 x 1.7
Alfresco	4.0 x 3.4
Garage	5.8 x 5.8

TOTAL FLOOR AREA  
**303.00m<sup>2</sup>**

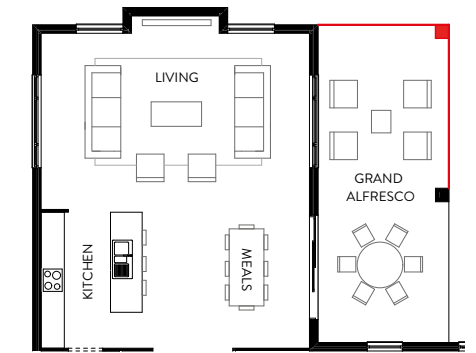
MIN. FRONTAGE  
**18m**

LENGTH 24.7m • WIDTH 16.3m

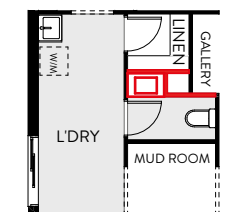
BEDS 4
LIVING 3
GARAGE 2
BATHS 2
STUDY 2



## Floor Plan Options



GRAND ALFRESCO



POWDER ROOM UPGRADE  
• With 750mm vanity



# Willow 326

The Willow 326 is the largest home design in its family and is best suited to an 18m lot frontage. Discover true sophistication and refined designed in this home plan. Enjoy peace and quiet with the living and dining areas at the rear of the home. The generous kitchen includes a spacious walk-in pantry fit for any growing family. Three bedrooms are revolved around a central activity and study room, perfect for the kids. The master suite is a private sanctuary with large walk-in robe and ensuite. Complete with library nook, dual office, and spacious laundry, this home really has it all.

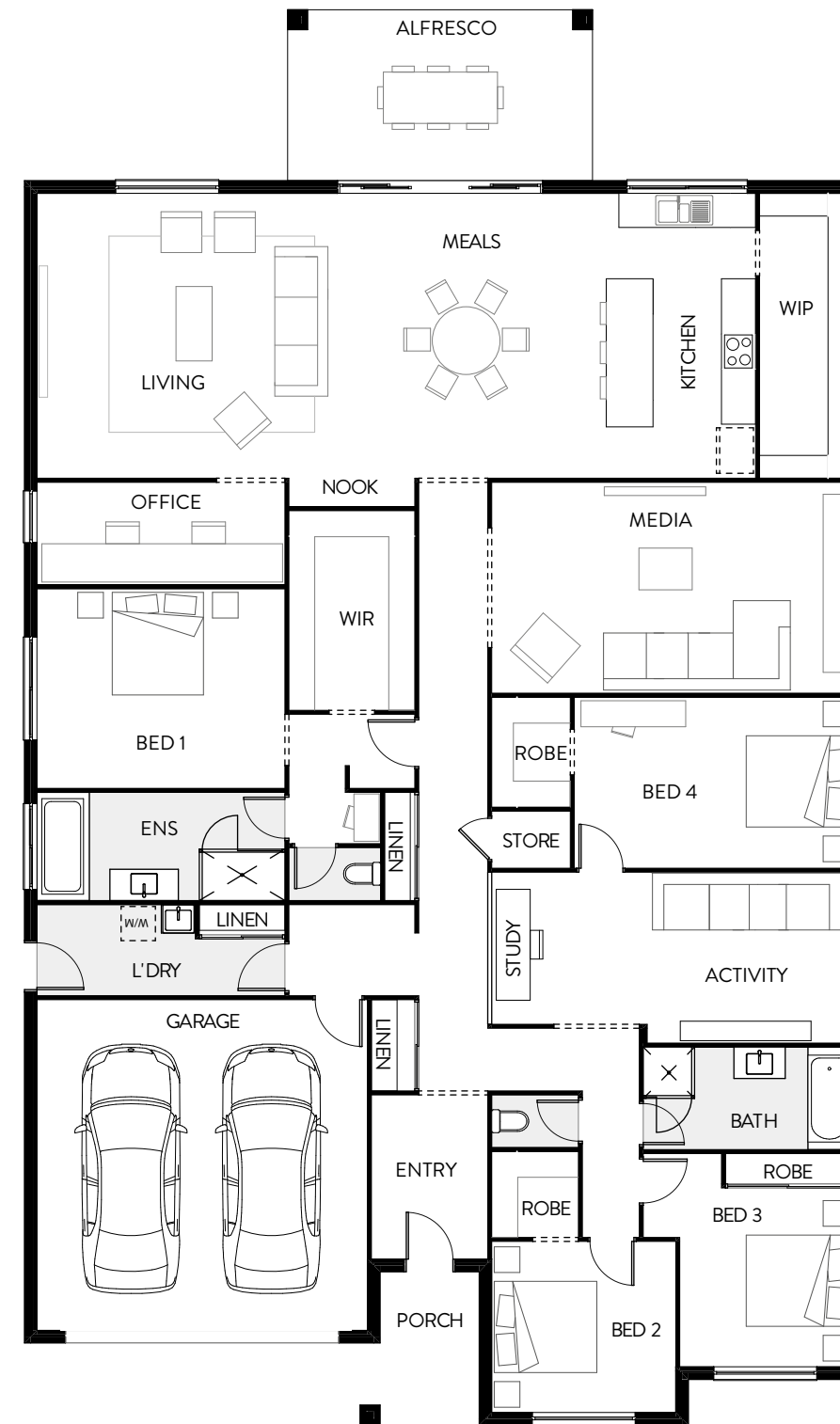
Bed 1	4.3 x 3.5
Bed 2	3.2 x 3.0
Bed 3	3.1 x 3.0
Bed 4	4.8 x 3.0
Dining	5.0 x 2.6
Kitchen	5.0 x 3.0
Media	6.3 x 3.7
Living	6.0 x 5.0
Activity	3.5 x 3.3
Study	2.6 x 1.4
Office	4.3 x 1.8
Alfresco	5.3 x 3.0
Garage	5.8 x 5.8

TOTAL FLOOR AREA  
326.45m<sup>2</sup>

MIN. FRONTAGE  
18m

LENGTH 24.9m • WIDTH 14.7m

<b>BEDS</b> 4	<b>LIVING</b> 3	<b>GARAGE</b> 2	<b>BATHS</b> 2	<b>STUDY</b> 2
------------------	--------------------	--------------------	-------------------	-------------------



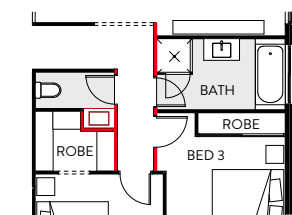
## Floor Plan Options



GRAND ALFRESCO



ALTERNATE KITCHEN LAYOUT  
• Servery bench extension  
• Main kitchen bench extension



POWDER ROOM UPGRADE  
• With 750mm vanity



## 18m Façade Options

Now that you have chosen a home design, complete the look with one of 9 façade options expertly design to perfectly fit your floor plan. Our stunning range of façades give you the flexibility and choice to achieve your ultimate dream home.



Classic Façade



Classic + Façade



Hamptons Façade



Maison Façade



Californian Façade



Valley Façade



Urban Façade



Metro Façade



Seaside Façade



## Nest Range — Double-Storey

Nest by Hallmark offers gorgeous double-storey home designs, providing enough space for families to live and grow comfortably. Our beautiful range of double-storey floor plans offer everything you could want in a home. Designed to maximise space, these home plans include functional and practical living areas with all the necessities of a family home. Browse our collection of double-storey homes and their choice of façades.





# Outlook 287

Enjoy life in the Outlook 287, a spacious double-storey home design suited to a narrow lot. Sure to become the heart of the home, you'll love the open-plan kitchen and walk-in butler's pantry. The generous alfresco area makes entertaining family and friends a breeze. Upstairs you'll find a cleverly designed activity room and study nook, creating the ideal space for the kids to study and play. The spacious master suite includes a walk-in robe and ensuite with a nursery room to the side, making this the perfect home for growing families.

Bed 1	4.5 x 4.0
Bed 2	3.2 x 3.0
Bed 3	3.5 x 3.2
Bed 4	4.0 x 3.0
Nursery	2.5 x 2.3
Alfresco	3.5 x 3.0
Study	2.5 x 0.6
Media	3.3 x 3.0
Activity	4.7 x 3.1
Dining	4.8 x 2.3
Kitchen	3.4 x 2.7
Living	4.7 x 3.9
Office	2.8 x 0.7
Garage	5.8 x 5.8

TOTAL FLOOR AREA  
**287.55m<sup>2</sup>**

MIN. FRONTAGE  
**10m**

LENGTH 20.3m • WIDTH 8.7m

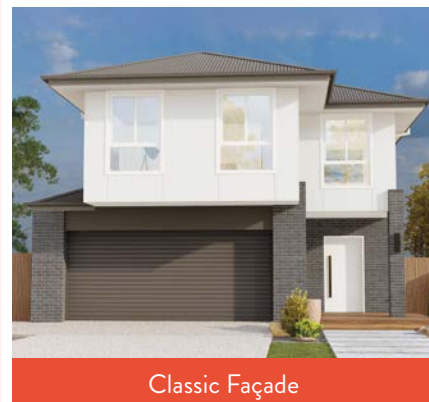
<b>BEDS</b> 4	<b>LIVING</b> 3	<b>GARAGE</b> 2	<b>BATHS</b> 2.5	<b>STUDY</b> 2
------------------	--------------------	--------------------	---------------------	-------------------



Urban Façade



Coastal Façade

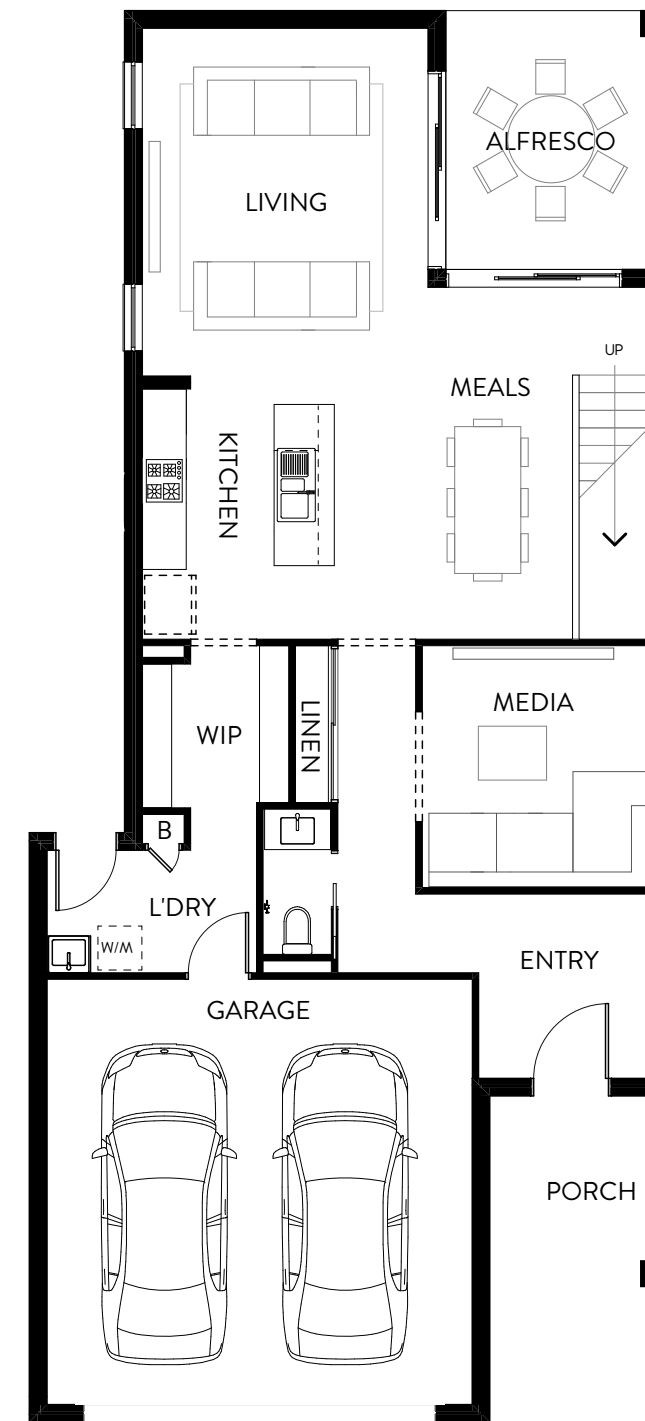


Classic Façade

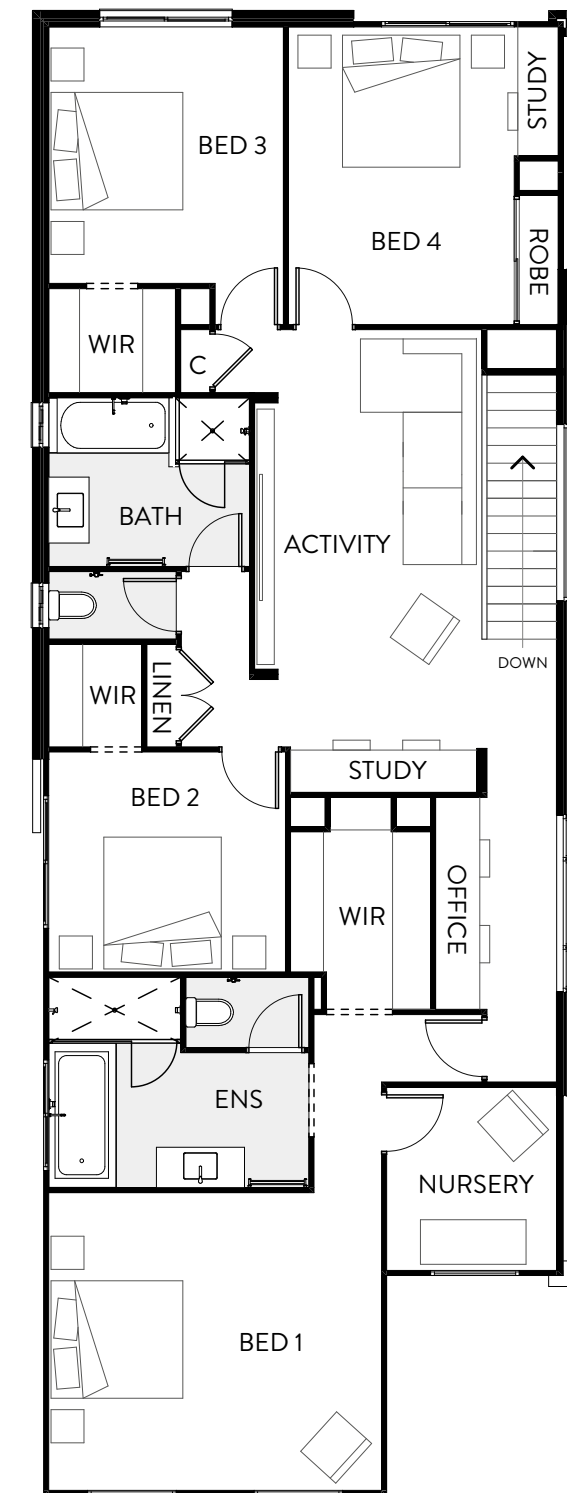


Classic + Façade

## First Floor



## Second Floor





# Grande 359

The Grande 359 is a spacious double-storey functional family home boasting 3 separate living areas, ensuring there's space for everyone. The open-plan living and dining areas flow through to an entertainer's alfresco, making the most of outdoor living in the Queensland climate. The gourmet kitchen features a large walk-in pantry which leads to the laundry and linen zone. The master suite is a private sanctuary, with reading room and nursery, plus large walk-in robe and resort style ensuite. Ideally suited to 14m wide lot, this double-storey house plan is spacious, making it perfect for family living.

Bed 1	6.1 x 3.5
Bed 2	3.7 x 3.2
Bed 3	3.6 x 3.0
Bed 4	3.6 x 3.0
Guest	3.6 x 3.0
Nursery	2.8 x 2.5
Alfresco	4.4 x 3.9
Study	3.6 x 1.2
Balcony	1.3 x 4.2
Media	4.0 x 3.6
Activity	3.6 x 3.0
Dining	3.9 x 3.6
Kitchen	5.1 x 3.6
Living	5.1 x 4.4
Office	3.0 x 2.0
Garage	5.8 x 5.8

TOTAL FLOOR AREA  
**358.92m<sup>2</sup>**

MIN. FRONTAGE  
**14m**

LENGTH 20.9m • WIDTH 12.3m

<b>BEDS</b>	<b>LIVING</b>	<b>GARAGE</b>	<b>BATHS</b>	<b>STUDY</b>
 5	 3	 2	 3	 2



Coastal Façade



Classic Façade

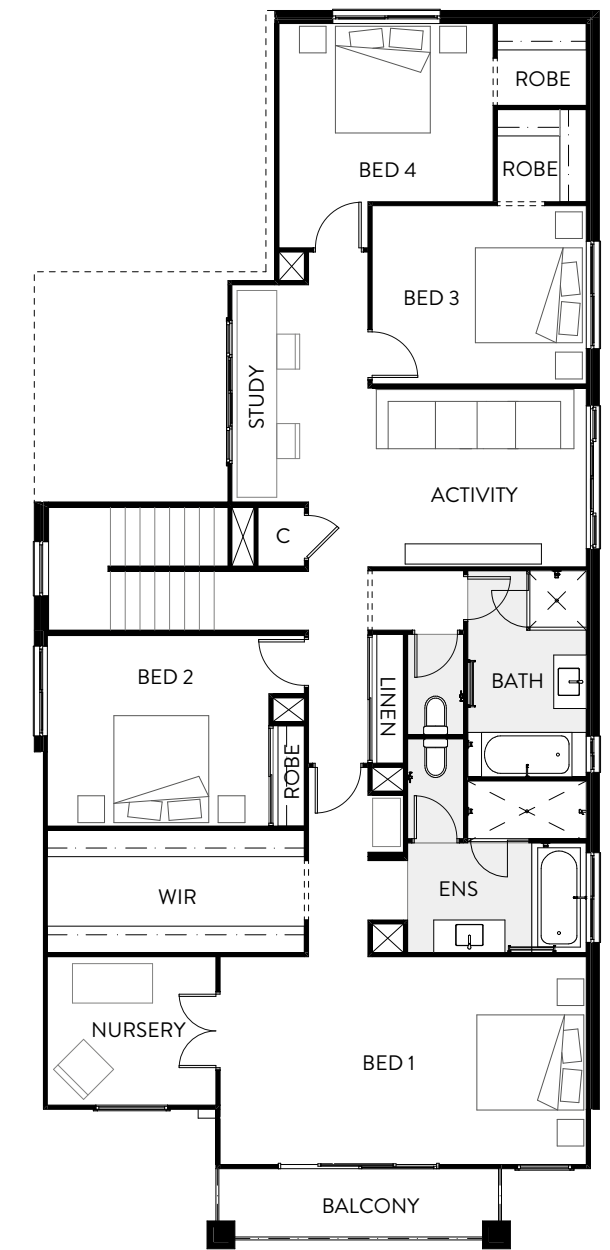


Classic + Façade

## First Floor



## Second Floor





# Stay Connected

## HAPPY HALLMARK CLIENTS

Nothing makes us happier than getting great feedback!



*"Thank you so much to everyone that we dealt with while building our dream home. We would recommend Hallmark Home to anyone and would definitely build through you guys again."* SHAE



*"Always keen to help, great communication through the entire process, very pleasant to deal with and made the huge task of building our first home a very memorable experience."* LANCE



*"We have just moved into our Hallmark home and are thrilled with the result. We are extremely happy with the workmanship and were impressed with the quality finish of our home."* ROSS AND VAL

## FOLLOW US

Keep up with our latest news on Facebook & Instagram.



## GET IN TOUCH

hallmarkhomes.com.au • 1300 326 515







# Your place to grow

Building a new home is one of life's most exciting milestones.

But it's also one of life's biggest decisions, so it's not to be taken lightly.

Hallmark Homes have a long history of stability and a flawless record.

We're passionate about building beautiful homes and genuinely care about our customers. We think it shows in everything we do, from the smooth building process to the superb quality finishes in all our homes.

[HALLMARKHOMES.COM.AU](http://HALLMARKHOMES.COM.AU)

1300 326 515

